

"Monster Brackets"

for Deep (24"+) Floating Shelves

"Shelve Big or Go Home"

"Monster Brackets" for Deep Floating Shelves are the solution for garage clutter and storage in tight spaces. Construct a top level of wall-mounted shelving with "Monster Brackets". Then suspend from that top shelf more levels of shelving below. One "Monster Bracket" replaces a conventional bracket for all shelves below. "Monster Brackets" eliminate posts that obstruct the floor space below and knee-braces that obstruct headroom. In a typical 2-car garage, for example, "Monster Brackets" can add 200 square feet or more of surface storage off the floor - an amount equal to the surface area of a one car garage.



Two-Shelf System Shown



"Monster Brackets"

Installation Illustrations

Rosz Development Design, Inc.

Revision schedule

Date

3/6/2018

Cover

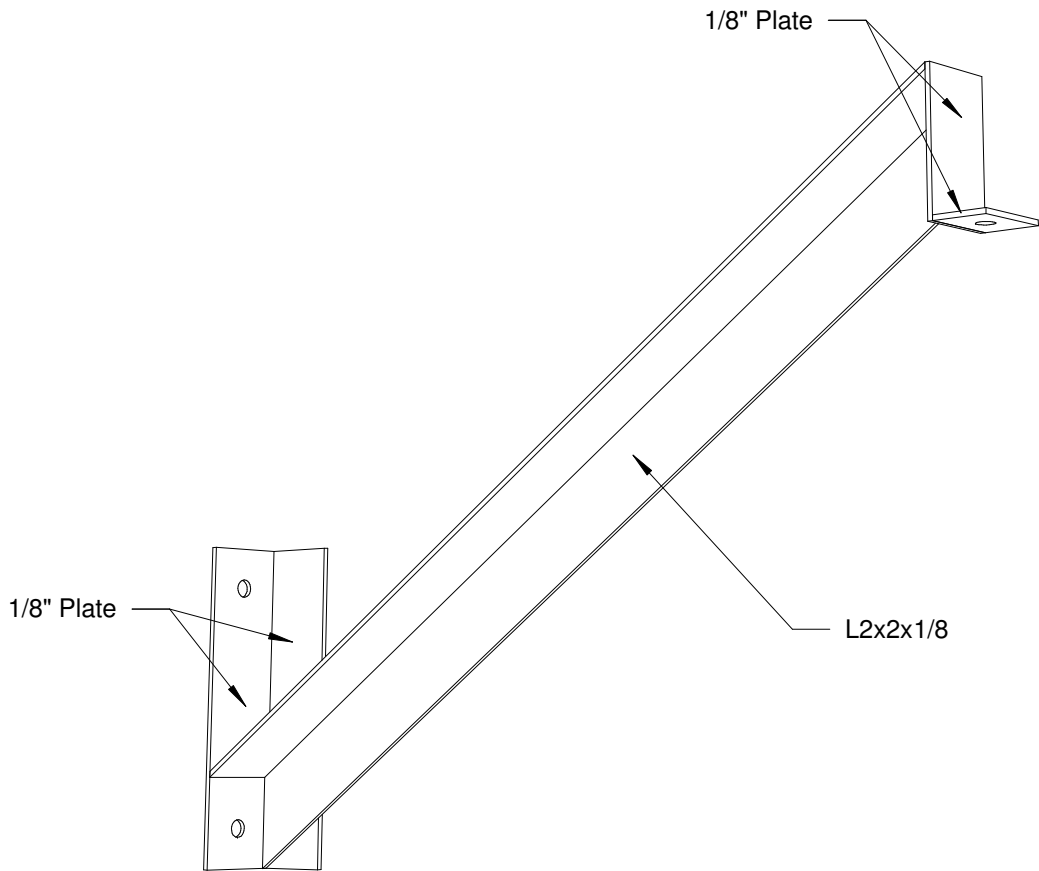
"Monster Brackets"
Installation Illustrations
Rosz Development Design, Inc.

Revision schedule

Date 3/6/2018

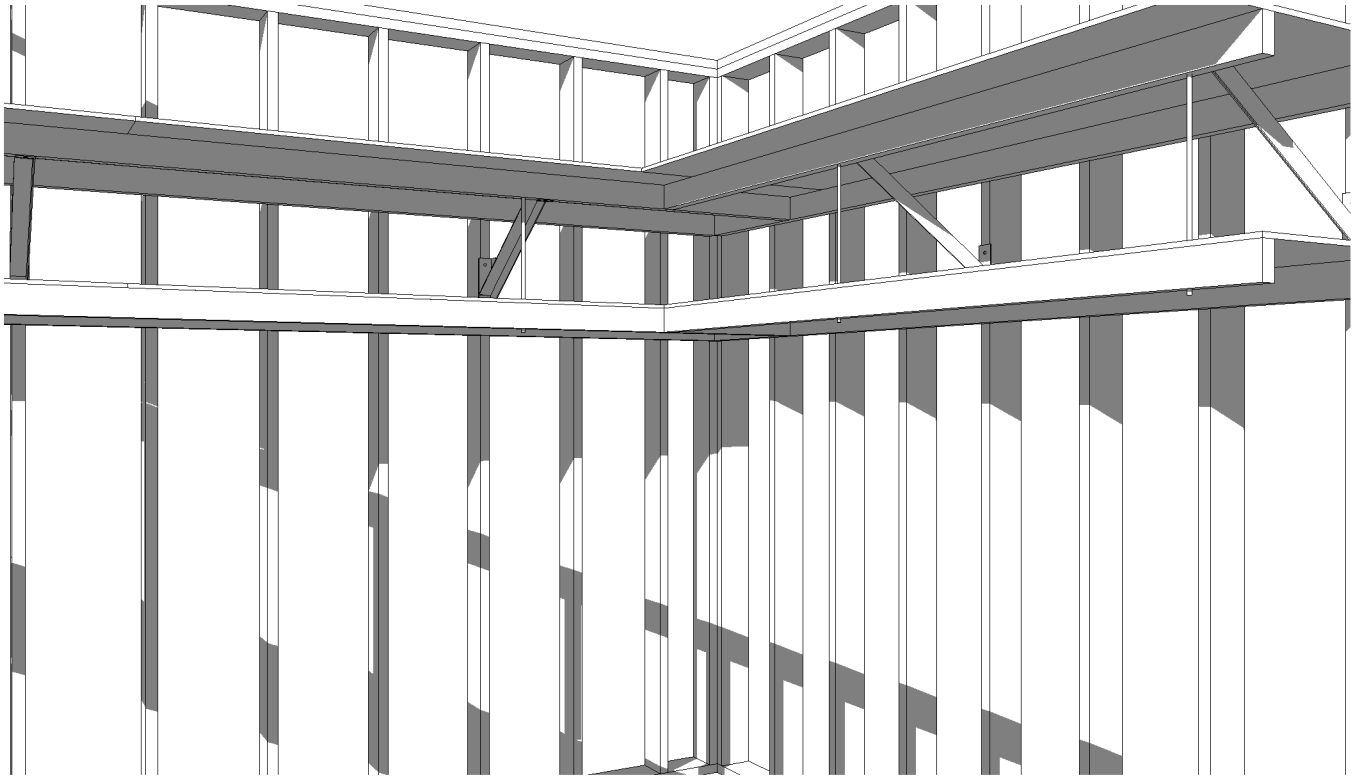
Description

1.00

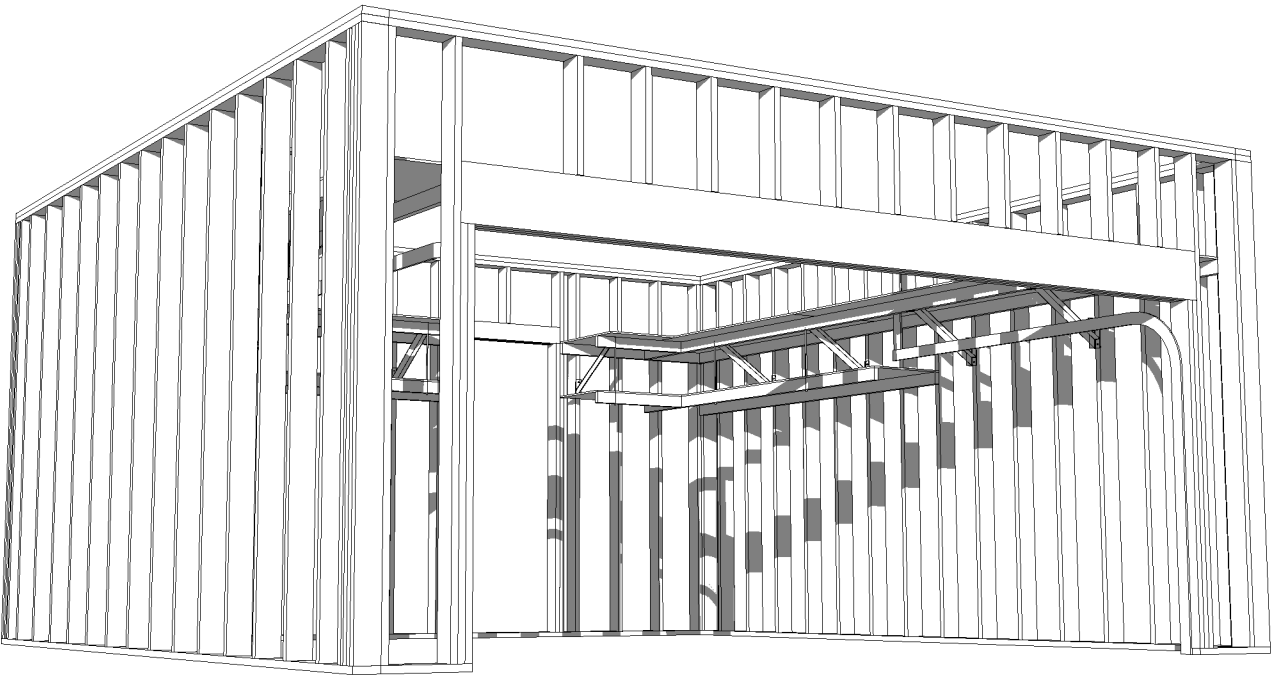


"Monster Brackets" are fabricated with 2" x 2" x 1/8" steel angle. They are designed for shelves to be a minimum of 24" deep, but can be deeper. They are designed for shelves to be a minimum of 18" tall, but can be taller. You install the "Monster Brackets" then construct your shelving with locally available building products including 2x4 lumber, plywood, threaded-rod, and associated fasteners and hardware.

**These drawings are intended to be Installation Illustrations and are not installation instructions. They display only how "Monster Brackets" may be utilized within a typical garage. Complete your design for your unique application. Install "Monster Brackets" as your design dictates.*

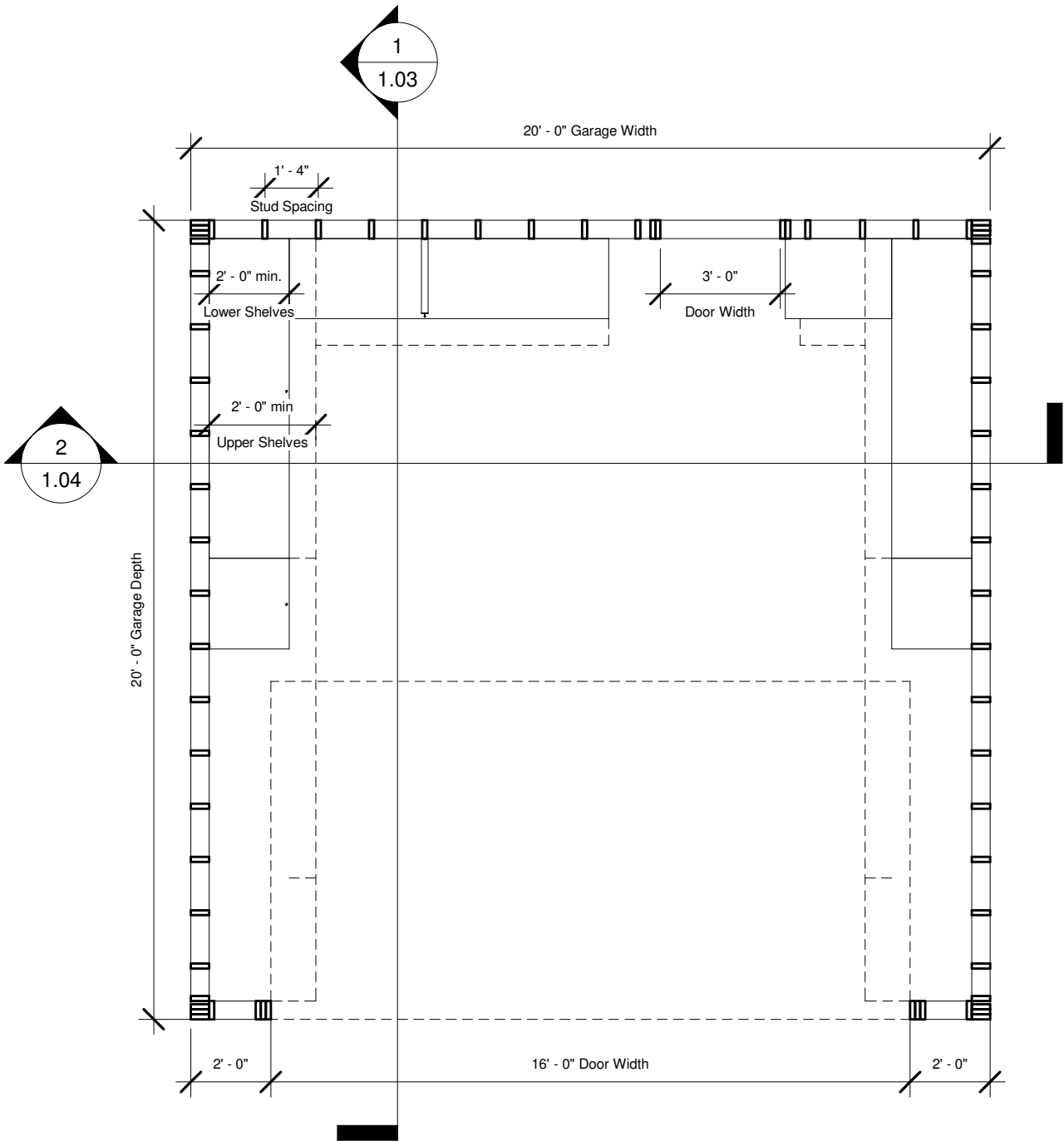


2 Corner Shelving



1 Exterior of Typical Garage

Each person's space and application are unique. Simply determine where and the amount of shelving you need. Mount "Monster Brackets" onto the wall studs of your existing walls. The 2x4 framing that supports the shelves carries the load. "Monster Brackets" transfer that load to the wall studs. If, for example, you determine that a 2x4 that is supported every 4' can carry the load you envision, then one "Monster Bracket" roughly every 4' is what you would install. The "Monster Brackets" support the upper shelf. The lower shelf(s) is suspended from the upper shelf by an all-thread rod. Hence, there are no posts that obstruct your floor and no knee-braces that impact headroom below your lower shelf.



1 Typical Floor Plan
1/4" = 1'-0"

"Monster Brackets"
Installation Illustrations
Rosz Development Design, Inc.

Revision schedule

Date 3/6/2018

Sample Shelving Plan



1. Horizontal and vertical layout. Lag first "Monster Bracket" to wall stud.



4. 32" deep upper shelf with 18" tall lower shelf shown. Install threaded rod.



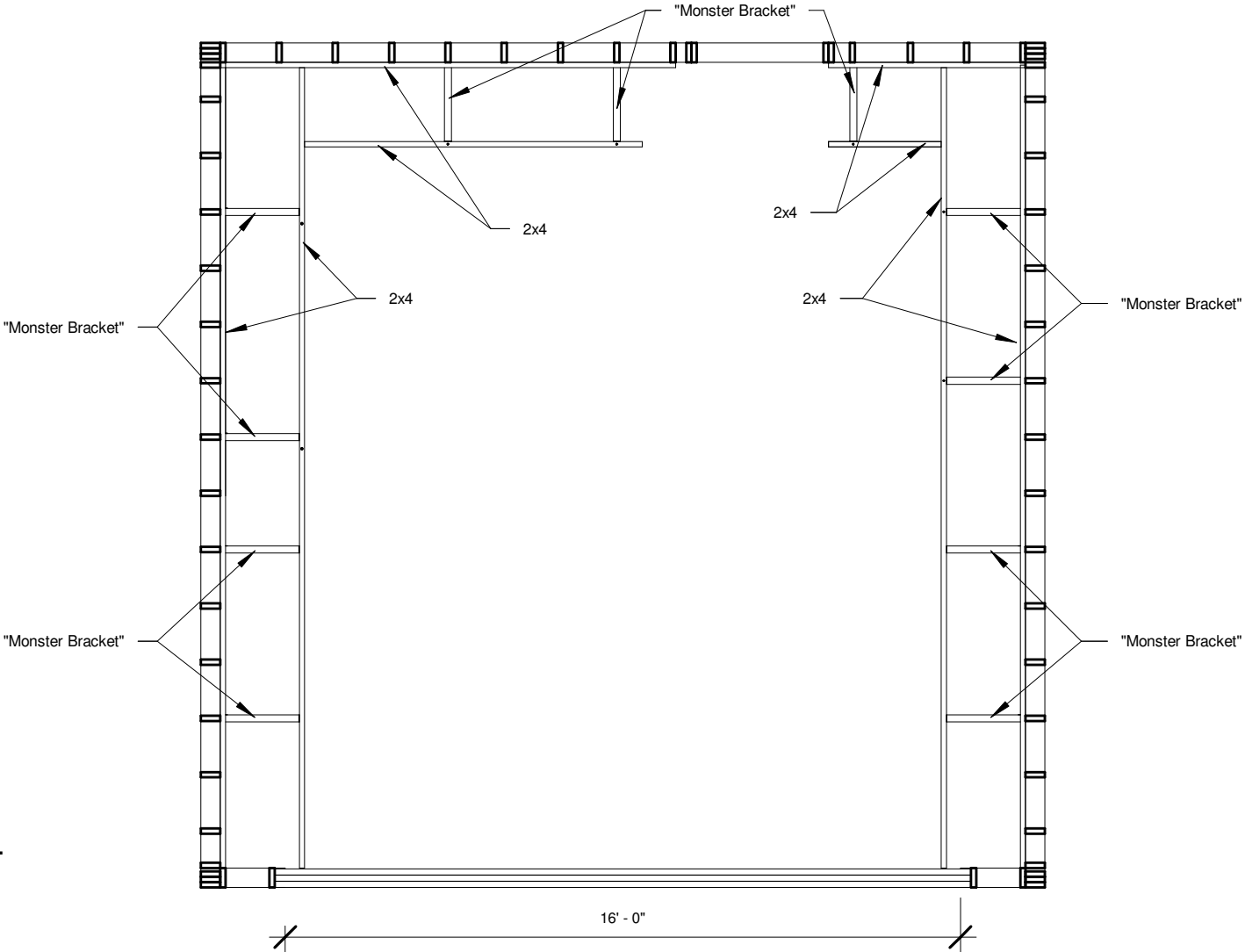
2. Two levels of shelving shown. Lag rear ledgers to wall studs. Install remaining "Monster Brackets" for the upper level shelving.



3. 18" tall shelving shown. Install upper front ledger.



5. Install lower front ledger and shelf. In this application shown, the lower shelf is 18" tall (the minimum) and 24" deep. The upper shelf is 32" deep.



1 Shelving Framing Plan (Assumes 16" o.c. wall studs)
1/4" = 1'-0"



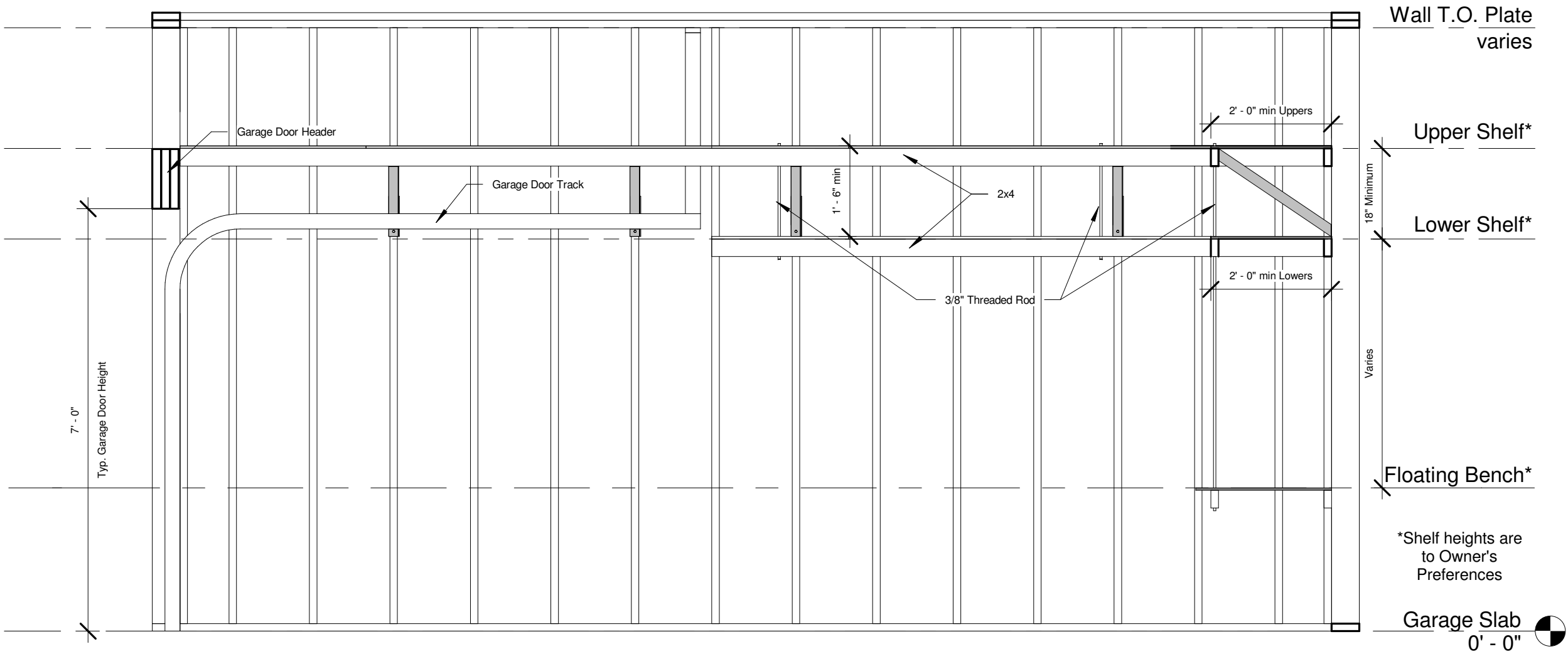
1. Prior to installation of threaded rod and lower front ledger and shelf.



2. Finished



3. Finished



"Monster Brackets"

Installation Illustrations

Rosz Development Design, Inc.

Revision schedule

Date 3/6/2018

Sample Sections

1.03



1. Section looking out of garage.
(32" top shelf, 24" second shelf x 18" tall)



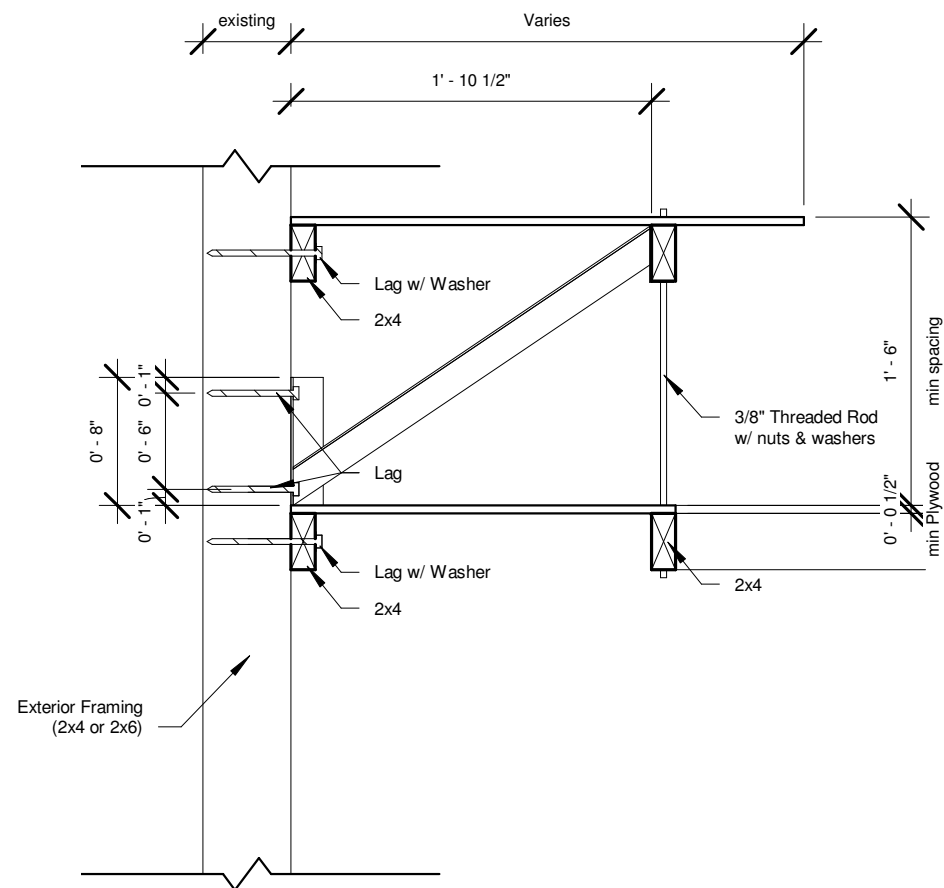
2. Section looking into garage.
(32" top shelf, 24" second shelf x 18" tall)



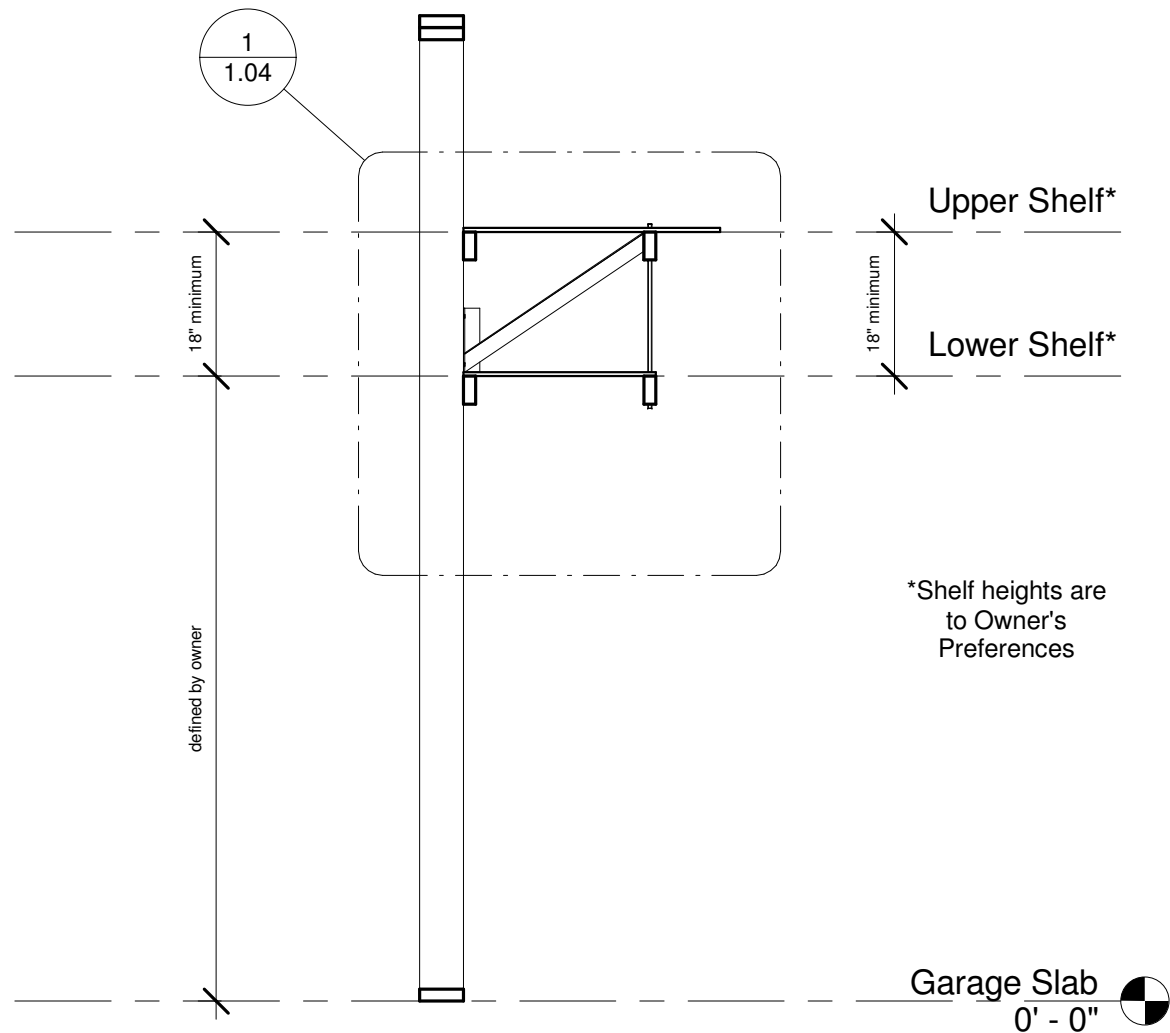
3. Top of threaded rod above upper front ledger and shelf



4. Bottom of threaded rod below lower front ledger and shelf



1 Shelving Section
1" = 1'-0"



2 Typ. Wall Section
1/2" = 1'-0"

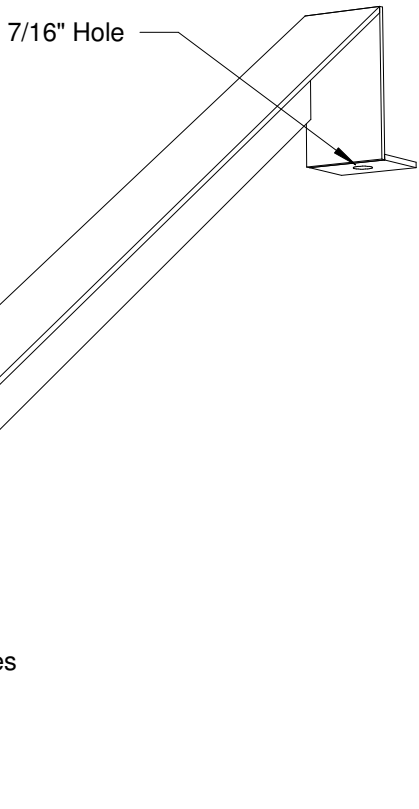
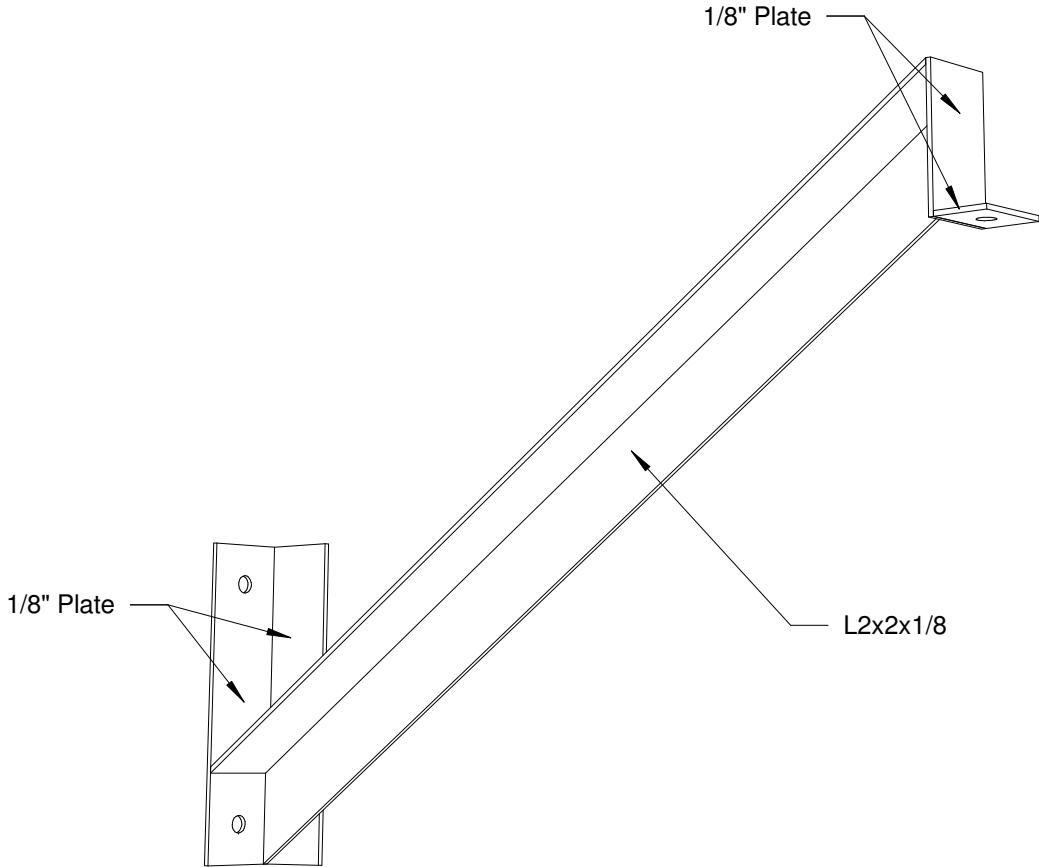
"Monster Brackets"
Installation Illustrations
Rosz Development Design, Inc.

Revision schedule

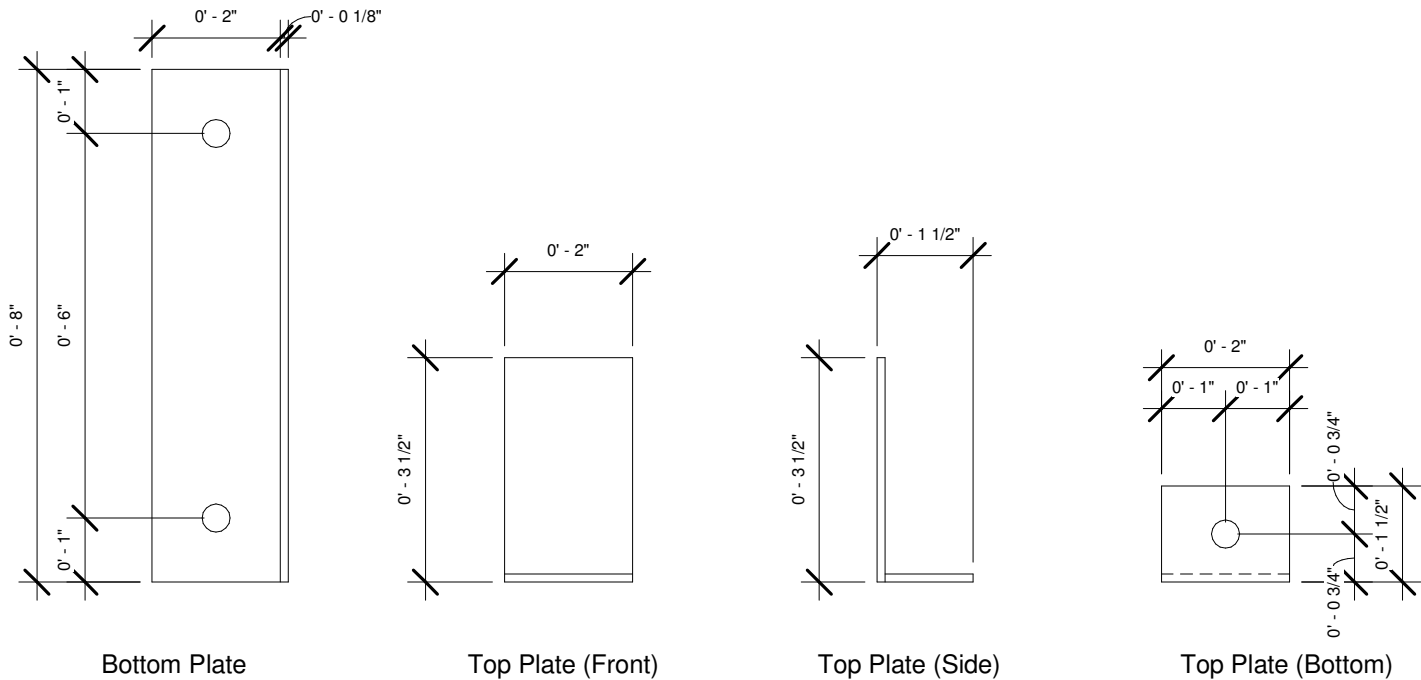
Date	3/6/2018
------	----------

Details

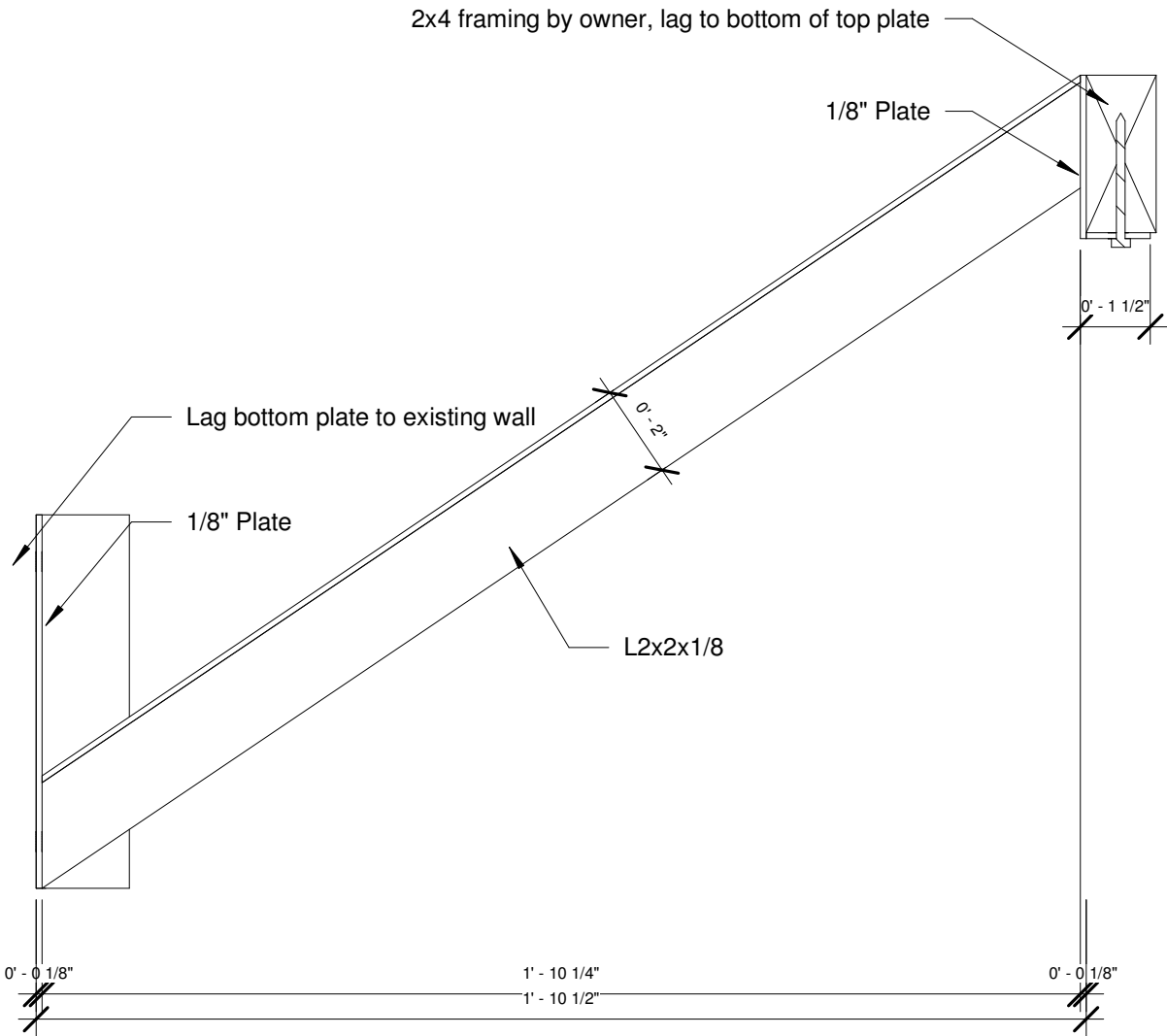
1.05



3 "Monster Bracket" Axonometrics



2 Plate Holes
4" = 1'-0"



1 "Monster Bracket" Elevation
3" = 1'-0"